

LEGEND

Previous Landslides

- 1999
- 2005 Cracks
- 1980 Cracks

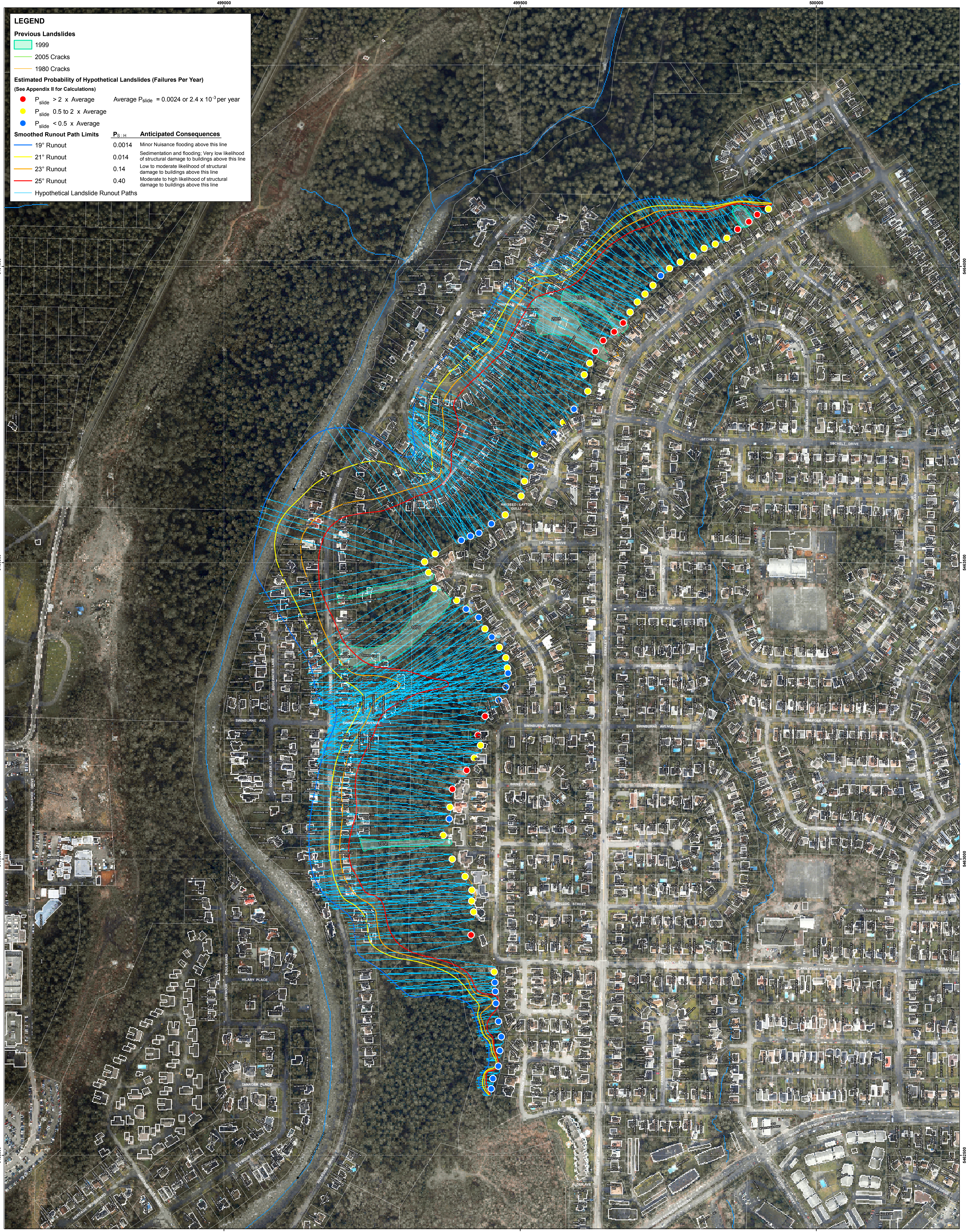
Estimated Probability of Hypothetical Landslides (Failures Per Year)
(See Appendix II for Calculations)

- $P_{slide} > 2 \times \text{Average}$ Average $P_{slide} = 0.0024$ or 2.4×10^{-3} per year
- $P_{slide} 0.5 \text{ to } 2 \times \text{Average}$
- $P_{slide} < 0.5 \times \text{Average}$

Smoothed Runout Path Limits

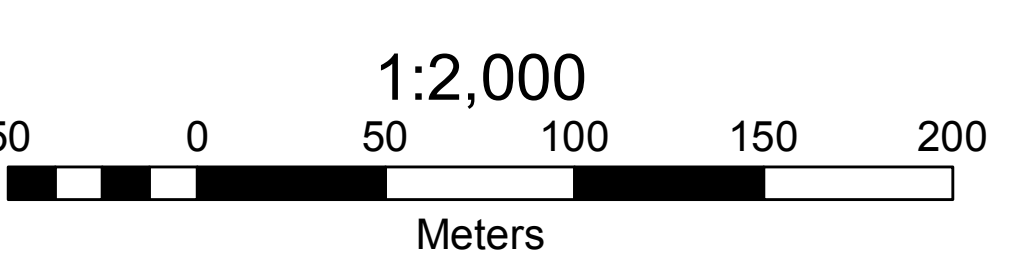
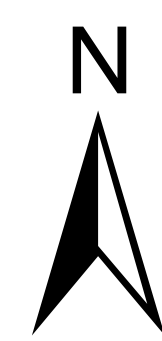
Runout	$P_{S,H}$	Anticipated Consequences
19° Runout	0.0014	Minor Nuisance flooding above this line
21° Runout	0.014	Sedimentation and flooding. Very low likelihood of structural damage to buildings above this line
23° Runout	0.14	Low to moderate likelihood of structural damage to buildings above this line
25° Runout	0.40	Moderate to high likelihood of structural damage to buildings above this line

Hypothetical Landslide Runout Paths



NOTES:

1. ORTHO PHOTOS DATED JULY 6th 2005, PROVIDED BY DMV ON OCTOBER 18th 2005.
2. SEE REPORT FOR EXPLANATION OF LANDSLIDE LIKELIHOOD AND RUNOUT POTENTIAL ESTIMATES.
3. THIS DRAWING ACCOMPANIES A BGC ENGINEERING INC. REPORT TO DISTRICT OF NORTH VANCOUVER TITLED "BERKLEY LANDSLIDE RISK MANAGEMENT, PHASE 1 RISK ASSESSMENT" DATED JANUARY 2006. THIS DRAWING MUST NOT BE USED WITHOUT CONSIDERATION OF THE STATEMENT OF LIMITATION GIVEN IN THE TEXT OF THE ACCOMPANYING REPORT.



NO.:	12,000				
DATE:	JAN 2006				
DESIGNED:	WKL				
CHECKED:	MLP				
APPROVED:	MLP				
REV.:	DATE	REVISION NOTES	DRAWN	CHECKED	APPROVED

BGC ENGINEERING INC.
AN APPLIED EARTH SCIENCES COMPANY

Vancouver, BC Phone: (604) 684-5900

DISTRICT OF NORTH VANCOUVER

PROJECT: BERKLEY LANDSLIDE RISK MANAGEMENT
TITLE: LANDSLIDE LIKELIHOOD AND RUNOUT POTENTIAL
PROJECT NO.: 0404-002
DATE: 2
REV: 0

MD 1983 UTM Zone 18N